

BILGEWATER

November 2024




Suzie looking great as she sails to victory in Passage Race 1



COMMITTEE DIRECTORY 2024-2025

Committee Member	Portfolio	Contact
Murray Pearce	Commodore Halsail Handicap Administrator Gulf Classic, Sponsorship	027 495 1223
Flip Rayner	Vice Commodore Race Officer TY YNZ and NZTYA Liaison	021 354 773
Chris Martin	Treasurer Gulf Classic KKBC Liaison	021 137 8205
Andrew Jones	Secretary Membership Manager	022 326 1993
Anton Post	TY Representative New Members Communications Bilgewater, Handbook	021 296 9346
Rodger Bonnett	Keeler Representative Quartermaster	021 423 457
Luke Feldman	Compound Member Liaison Safety Coordinator	021 0811 5015
Mark Bang	Social Convenor TY Handicap Administrator	027 238 5148
	Non-Committee Portfolios	
Hugh Beecroft	Compound Convenor	027 496 7033
David Whitburn	Compound Site Manager	027 384 1014

Website: www.waikatoyachtsquadron.org.nz
 Email: waikatoyachtsquadron@gmail.com
 : www.facebook.com/groups/waikatoyachtsquadron/
 Postal: PO Box 4263, HAMILTON 3247

Our first and foremost objective is to encourage and support safe family sailing – both cruising and racing

Commodore's Comment

We are now into our sailing season with the first round of our Passage Series held over Labour weekend. Astute safety planning by the race officers and committee saw the racing delayed to Sunday when Saturday's weather looked at the upper end of wind limits for holding trailer boat events. Well done and good call by the TY and Keeler RO's. The Sunday regatta saw a good turnout with 15 boats competing in the TY classes, and 5 in the keeler division.

As this goes to press, we are on the cusp of our annual Great barrier cruise. This has become a very popular cruise in recent years, and it looks like we may even exceed last year's fleet numbers of 19 boats. Anton on *Perpetual Motion* is the cruise coordinator this year with backup from me on *Royle Flush*. Please keep your VHF tuned to Ch 77 for on-the-water cruise updates, as well as the Facebook and WhatsApp groups for general information.

TY compound skippers will note we have completed the re-metalling of the compound. Hopefully this will serve us well in the years ahead. Your committee has also approved a capital works programme going out over the next 3 years. Initiatives included here are the upgrading of the open drains behind boats filling with Nova drainage pipe and metal; upgrades to our security system. We are considering laying concrete pads at our main gate entrance and wash bay area and providing a boat lift facility so members can work on their trailers more effectively.

This work programme will be budgeted and funded by compound income as well as using some of our compound financial reserves. My last comment on compound comes from Mary Couldrey, who has highlighted the need to cover our outboard motors from public view. These are the main targets for thieves to break into our compound. Please cover and lock your main outboards to your boat and store any lightweight dinghy outboards either in your cabin or well hidden from public view.

My final note is on changes we have made to the sailing handicap system for both our keeler and TY fleets. I refer you to a more in-depth article on these changes later in this Bilgewater.

Some of you may be aware that I recently had knee replacement surgery. I have joined that exclusive club led by Hugh Beecroft, Roger Bonnett and Jed & Kay Arbuckle. I can report progress has been slow and rather painful, but I am now well on the way now to full recovery. I hope to catch up with as many of you as I can on the Barrier cruise.

(Commodore) Murray



Upcoming Events

November

Great Barrier Island Cruise	Saturday 9th – Saturday 16th
<p>Annual cruise to Great Barrier Island (meeting Waiheke Channel on the evening of Saturday 9th November for departure on Sunday 10th November)</p> <p>See article in last month's Bilgewater for important cruise details</p> <p>Contact Anton on 021 296 9346 with any concerns or if you are not yet on the list.</p>	
Passage Event 2	Saturday 23rd
<p>Trailer Yachts – Ponui – see details below</p> <p>Keelers – Ponui – see details below</p> <p>Beach Gathering – Close to Kawakawa Bay</p>	
Round the Buoys Series 1	Sunday 24th
<p>For Trailer Yachts – close to Kawakawa Bay – details to follow</p>	

December

Passage Event 3	Saturday 7th
<p>Trailer Yachts – Course TBC (North Waiheke Channel finish)</p> <p>Keelers – Hook's Bay</p> <p>Beach Gathering – North Waiheke Channel</p>	
Christmas BBQ	Tuesday 10th
<p>Dinner at Hamilton Yacht Club</p> <p>Details to follow</p>	

Save the Date – Gulf Classic 2025

Gulf Classic 2025 will be held on the weekend of 15-16th March 2025

Squadron Boat handicap Programme for Trailer and Keeler Fleet

In recent years we have been using the Halsail software programme to run our race handicap programme to maintain skipper and boat ratings in our handicap race series. Halsail has options of 9 handicapping programmes, and for our handicap series we have been using the NHC (National Handicap for Cruisers), a progressive handicap programme that adjusts individual boat handicaps after each race working from a formula using your elapsed time and the average elapsed time of the fleet to reset handicaps.

Given that we have been running all boats as one class, we have identified problems when we have a very extended elapsed time range across the fleet. Also, this NHC programme has a fixed ratio for resetting handicaps, that also may adversely affect our top end racing skippers who race regularly and very competitively with each other.

This season we have changed to two Trailer divisions:

- “TY Race division” for skippers that want to race regularly and competitively against each other
- “TY Cruise division” for skippers who want a more leisurely sailing experience and who may not compete in every event.

This change has also given us the opportunity to review the way our progressive handicaps can be reset. Apart from the previously mentioned NHC programme, Halsail also has another progressive handicapping programme called ECHO. This one gives the option to adjust the sensitivity of handicap re adjustment, and the consensus from our handicapping group is that this better serves our fleet, especially given we have a dedicated race fleet where skipper elapsed times should fall within a tighter range- possibly a 30-60 minute spread as opposed to 1-3 hour spread when we ran all boats as one fleet.

I should also mention our keeler fleet here and all their skippers have received a detailed email setting out changes made for them. Unfortunately, we have never had a big enough keeler fleet in recent years to see the NHC progressive handicap programme work accurately. This year at an initiative from several keeler skippers we have changed their handicap system to a fixed rating, being their boat design rating amended by a skipper experience factor. This amended handicap will be fixed for the first 4 race events, then reviewed and amended if skippers experience adjustments are found to be too biased- either up or down.

In summary, the presentation of results will continue to come to you by email and WhatsApp message service following each event. Under the series tab only two will show, being “Passage series 2024-25” and “RTB Series 2024-25”. Under the class tab you can select and look at results for any of our racing classes. In the Passage Series these classes are:

- Keeler handicap – using a fixed TCF (Time Correction Factor) for each race amended after 4 races if required.
- Keeler Open – using the fixed PHRF boat design rating for every race
- TY-Race handicap – using ECHO progressive to set next race handicaps
- TY-Race Open – using fixed NZTYA boat rating for every race
- TY-Cruise Division – using ECHO progressive to set next race handicaps

My final comment applies to results from the Tamaki Strait Passage Event on Labour Weekend. When I sent out results for the TY-Race Division I realised I had made a mistake in entering some boat baseline handicaps. After correcting these baselines, the TY handicap results have slightly changed. I expect to be keel-hauled at some time for this mistake, but that is to be expected in this role as squadron handicap administrator. I'm buying a bigger snorkel!!

Murray Pearce

Halsail Handicap Administrator



Pangur Bán and E Type 2 just after starting Passage Race 1 on Labour Weekend

Positions Vacant – Gulf Classic Committee

We are looking for assistance with organising the Gulf Classic Endurance Regatta, to be held on the weekend of 15th March 2025.

At present, Chris Martin and Murray Pearce are the committee tasked with organising the Gulf Classic. They would like a further 2 or 3 people involved, and preferably outside of existing committee, so as to spread the load and get more members experienced in organising a big open regatta like this.

If anyone would like to volunteer then please call Murray on 0274 951 223.

Notice of Event for Passage Event 2 – Saturday 23 November

Trailer Yachts

Course: Course 6 - Ponui Circumnavigation, Cruising division 9:30am start, racing division 10:30am start

Event coordinator: TBC

Entries: To the Event Coordinator by WhatsApp or VHF channel 77 by 0900 (cruising) or 1000 (racing) advising name of yacht, number of crew on board.

Instructions: (Stbd Course) From the start line at Sandspit Beacon – keeping Pakihi Island to STB, between Pakihi and Karamuramu Is - to the western fishing reserve marker off Passage rock - to the Ruthe Passage keeping Ponui Island to STB – rounding Ponui to the finish line between Sandspit Beacon and the western point of Motunau Bay

See **Red Line** below for indication of course (written instructions take precedence):

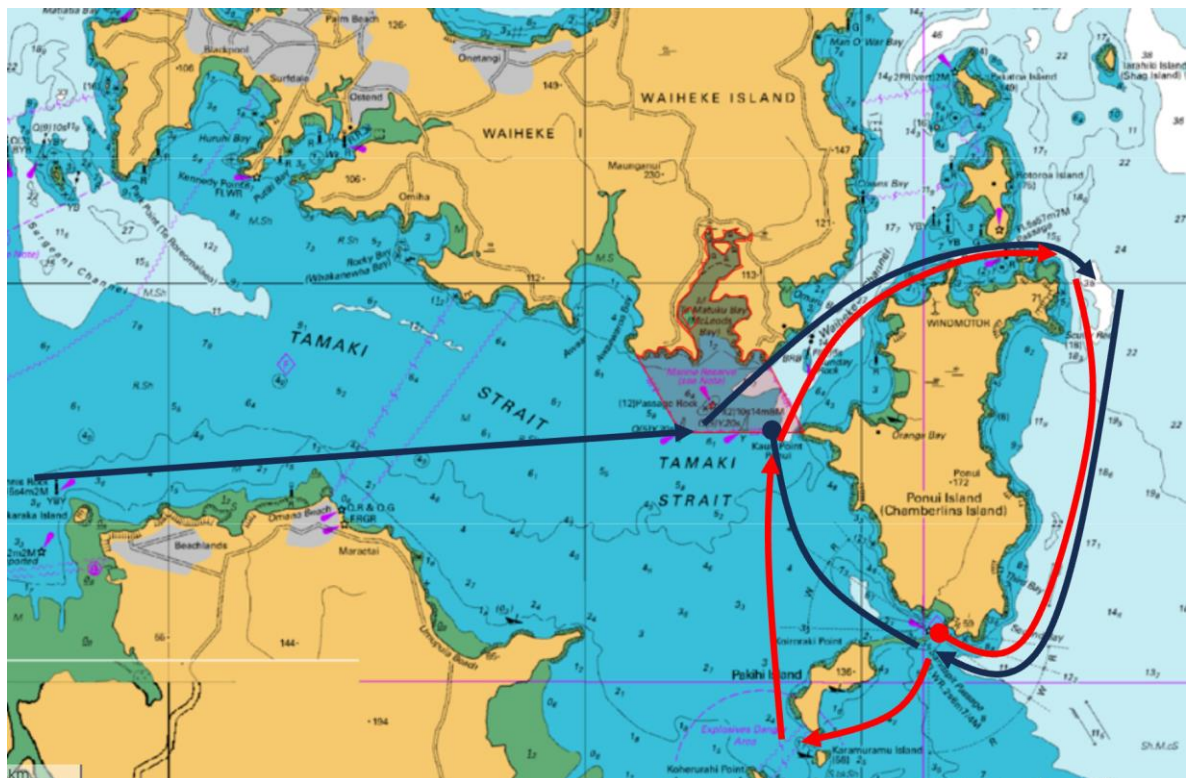
Keelers

Course: Course 6 - Ponui Circumnavigation, 10.30am start to converge with trailer yachts

Event coordinator: Murray Pearce (0274 951 223)

Instructions: From the start line at Pine Harbour to the Waiheke Channel keeping Passage Rock to PORT – through the Waiheke Channel and Ruthe Passage keeping Ponui Island to STARBOARD – to the finish line between Kauri Point and the port side marine fishing reserve marker.

See **Black Line** below for indication of course (written instructions take precedence):



Note: The RO reserves the right to modify the course depending on conditions. Updated advice will be given at the briefing (at 0930 hrs for TYs and 1000 hrs for Keelers).

As usual we plan to anchor in a sheltered bay (perhaps Green Bay or Pakihi) on Saturday evening for prize giving and a beach gathering. The club BBQ will be running.

Any skippers only wanting to cruise to the destination are most welcome to join the cruising division or meet us at the beach gathering. Listen on VHF CH 77 for any updates on the day.

Report on Passage Series 1 – Tamaki Strait – Labour Weekend

We had a great fleet for the first TY race of the season, with 8 boats racing, 5 cruising, and another 2-3 TY's out on the water during the weekend.

The start line was set just west of the gap between Karamaramu and Pakihi. The cruisers headed away first, then the racers had a relatively bunched start with most if not all boats over within the first 30s. The corrected times at the end of the race were also nicely bunched, boding well for some good tight racing this season.

All was going well during the first leg towards the eastern marine reserve buoy, with some jostling for position and luffing going on between *Hue & Cry* and *Perpetual Motion*. However as we neared the Waiheke Channel, most of us sailed into a wind hole, which allowed *Suzie* and *E Type 2* at the front to make some serious gains as they rounded the marker into the second leg, towards the Rocky Bay buoy.



Quest very nearly becalmed

We drifted beside *Quest* for some time, briefly reaching speeds of 0.0kts. By the time *Perpetual Motion* found some wind we were in time to see the keelers coming past, as well as *Suzie*, the only TY who could find the angle for her kite (see cover).

Soon the wind was back to 12-20kts, and we made good time down to Rocky Bay and back, trying hard to haul in *Portfolio*, but with no real success.

At last we rounded into Waiheke Channel, and at last were able to outsail *Portfolio* and also *INXS*, who had joined us from Kawakawa Bay.



Royle Flush majestically cruising past

We tried to point towards the mussel farm, but realised that we could finish anywhere in line with its edge. We put in a couple of tacks to avoid Frenchman's hat, and ended up crossing the line hard on the heels of *Escargot*.

A great course with mostly great conditions (apart from the half hour hole!) and really enjoyable to meet so many other Squadron boats along the journey.

We had a lovely beach gathering BBQ at Huse Bay (just north of Manowar Bay), with 13 squadron boats spending the night (*Sugarshack*, *Escargot*, *Kingfisher 2*, *Hold On II*, *Acushla*, *E Type 2*, *Perpetual Motion*, *INXS*, *Indulgence*, *Quest*, *Emoyeni* and *Royle Flush*).



Mmm Marshmallows!

Results for Passage Series 1 – Tamaki Straight – Labour Weekend

TY Handicap

Place	Sail	Type	Hcap	Name	Owner	Finish	Elapsed	Corr- ected	Points	Next Hcap
1	T1065	Noelex 25	0.907	Suzie	Chris Martin	14:40:04	4:09:04	3:45:54	1	0.918
2	T3613	Noelex 25	0.803	Portfolio	Andrew King	15:16:00	4:45:00	3:48:51	2	0.811
3	T3702	Elliot 7.4	0.956	E Type 2	Hugh Beecroft	14:31:05	4:00:05	3:49:31	3	0.965
4	6525	FARR 1020	0.900	Perpetual Motion	Anton Post	14:56:23	4:25:23	3:58:51	4	0.901
5	T3247	Gazelle Mk	0.906	Escargot	Flip Rayner	14:54:59	4:23:59	3:59:10	5	0.907
6	T588	Catalina 7	0.839	Hue and Cry	Luke and Phoebe Feldman	15:23:49	4:52:49	4:05:40	6	0.835
7	T4162	Bonito Aqu	0.771	Hold-On II	Mark Bang-Pip Edwards	15:54:00	5:23:00	4:09:02	7	0.765
8	T3545	Noelex 22	0.868	Panga Ban	James Hepburn	15:42:00	5:11:00	4:29:57	8	0.849

TY Open

Place	Sail	Type	Hcap	Name	Owner	Finish	Elapsed	Corr- ected	Points
1	T1065	Noelex 25	0.8450	Suzie	Chris Martin	14:40:04	4:09:04	3:30:28	1
2	T3702	Elliot 7.4	0.8850	E Type 2	Hugh Beecroft	14:31:05	4:00:05	3:32:28	2
3	T3247	Gazelle Mk	0.8200	Escargot	Flip Rayner	14:54:59	4:23:59	3:36:28	3
4	T588	Catalina 7	0.7950	Hue and Cry	Luke and Phoebe Feldman	15:23:49	4:52:49	3:52:47	4
5	T3613	Noelex 25	0.8450	Portfolio	Andrew King	15:16:00	4:45:00	4:00:50	5
6	T4162	Bonito Aqu	0.7600	Hold-On II	Mark Bang-Pip Edwards	15:54:00	5:23:00	4:05:29	6
7	T3545	Noelex 22	0.8110	Panga Ban	James Hepburn	15:42:00	5:11:00	4:12:13	7

TY Cruising

Place	Sail	Type	Hcap	Name	Owner	Finish	Elapsed	Corr- ected	Points	Next Hcap
1	T800	Noelex 25	0.845	Quest	Clive Tarry	16:09:00	6:09:00	5:11:48	1	0.845
2	T600	Noelex 25	0.843	Indulgence	Bruce Gordon	16:40:00	6:40:00	5:37:12	2	0.843
DNF	T655	Merlin 6.1	0.703	Pearl 55	Koen Aldershof				5	0.703
DNF	T388	Noelex 22	0.811	Dream On	Robert Paine				3	0.811
DNF	T1137	Joker 6.7	0.755	Sugar Shack	Ian Scoltock				3	0.755

Keeler Handicap

Place	Sail	Type	Hcap	Name	Owner	Finish	Elapsed	Corr- ected	Points
1	9120	HANSE 350	0.7430	Louisa	Tim and Jo Hayward	13:38:51	1:53:51	1:24:35	1
2	9898	HANSE 370	0.8110	Audrey	Bryan O'Brien	13:43:00	1:58:00	1:35:42	2
3	6590	FARR 1020	0.7720	Acushla	Jim Pasco	13:50:18	2:05:18	1:36:44	3
4	6730	Lotus 10.6	0.7230	Kingfisher II	Greg Reeve	14:01:12	2:16:12	1:38:28	4
5	9000	Given Voya	0.7550	Royle Flush	Roy Woolerton	14:08:20	2:23:20	1:48:13	5

Keeler Open

Place	Sail	Type	Hcap	Name	Owner	Finish	Elapsed	Corr- ected	Points
1	9120	HANSE 350	0.7280	Louisa	Tim and Jo Hayward	13:38:51	1:53:51	1:22:53	1
2	9898	HANSE 370	0.7800	Audrey	Bryan O'Brien	13:43:00	1:58:00	1:32:02	2
3	6590	FARR 1020	0.7420	Acushla	Jim Pasco	13:50:18	2:05:18	1:32:58	3
4	6730	Lotus 10.6	0.7300	Kingfisher II	Greg Reeve	14:01:12	2:16:12	1:39:26	4
5	9000	Given Voya	0.7550	Royle Flush	Roy Woolerton	14:08:20	2:23:20	1:48:13	5



Escargot shortly after crossing the finish line

For Sale – Joker 820 - Falkor



From Wayne Johnstone:

“Falkor is for sale. She is a Joker 820. She well known within the Waikato Yacht Squadron to be a great boat in excellent condition.

Please pass the word around, and if anyone is interested, please ask them to contact Wayne Johnstone (027 623 6366) for further information.”

Our Squadron and Gulf Classic Sponsors



Sponsors of our 2024 Gulf Classic

North Sails

Kiwi Yachting – Safety at Sea

Auto-Trail

Pine Harbour Electrical

Burnsco

Hancock Wines and Spirits

Alpha Electrical

Fineline Marine

Captain Compost (Landscape Supplies)

Pine Harbour Marina

Please Support our Sponsors!