

North Island Trailer Yacht Championship
21st – 22nd February 2026

also doubling as the
Noelex 22 North Island Championship

The Organising Authority is The Waikato Yacht Squadron,
P O Box 4263, Hamilton East, New Zealand

NOTICE OF RACE

1.A SPIRIT AND INTENT OF EVENT

After several years on hold, we're excited to revitalise this iconic event and reignite enthusiasm for a competitive North Island Trailer Yacht Championship.

In recent years, limited volunteer capacity has made it difficult to run this event. But we're ready to change that. The goal is to rebuild momentum and offer a fun, competitive weekend for trailer yacht sailors.

To make it happen given our current sailing schedule, we're incorporating the North Island TY Championship into one of the Waikato Yacht Squadron's scheduled race weekends as a parallel series. A group of dedicated volunteers will be leading the charge to create an enjoyable and engaging weekend for all. Without their commitment, this event wouldn't be possible.

While we're making every effort to deliver a fun regatta, our limited resources and volunteer power mean we'll need a bit of patience, understanding, and a shared spirit of getting out on the water and enjoying the experience together.

1 RULES

1.1 The regatta will be governed by the rules as defined in YNZ *The Racing Rules of Sailing 2025-2028* (RRS). The rules of individual yacht classes shall apply, except as any of these are altered by the Notice of Race or Sailing Instructions.

1.2 Yachting New Zealand Safety Regulations Shall Apply as Follows

Trailer Yachts

All Trailer Yacht designs as approved by the New Zealand Trailer Yacht Association (NZTYA) may enter and shall comply with the Yachting New Zealand Safety Regulations Part V - Trailer Yachts - Category B. These regulations take precedence over individual class rules.

All Yachts

All yachts shall carry an operating and functional marine VHF transceiver, fitted with Channels 16, 77, 64 and 60, which shall remain switched on and tuned to the appropriate Channel, always monitored by the crew on board and available for use. All yachts shall carry an up to date version of Chart NZ 532 (Approaches to Auckland) and Chart NZ 5324 (Tamaki Strait and Approaches including Waiheke Island) or equivalent digital chart. Any incidents arising from inaccuracies in the charts are the sole responsibility of the skipper.

RRS Rule 52 is amended to permit the use of self-steering devices.

All yachts shall, upon request, make themselves available for inspection for compliance with safety regulations. A yacht may also be inspected after the race.

1.3 Equipment Rules / Ratings

Corrected times for trailer yachts shall be calculated from current ratings published by the NZTYA. The Race Committee reserves the right to assign a rating and Race Division for these entrants. The Race Committee also reserves the right to refuse any entry and/or to amend the rating of any yacht.

The Race Committee's decision on ratings shall be final, and no discussion will be entered into.

1.4 Appendix T (Arbitration) of the RRS will apply.

2 ADVERTISING

2.1 Competitor advertising will be restricted as follows:

Competitor advertising shall not conflict with advertising by the race sponsors or the Club sponsors.

2.2 Boats may be required to display advertising chosen and supplied by the organising authority. If this rule is broken, World Sailing Regulation 20.9.2 applies (Discretionary Penalty).

3 ELIGIBILITY AND ENTRY

- 3.1** The regatta is open to all NZTYA Trailer Yacht members. Classes with class rules specifying the minimum crew must abide by their class rule. Aside from class rules, there is no minimum or maximum crew size required for each race.

Please submit entries **online** on the Official Entry Form:

<https://www.waikatoyachtsquadron.org.nz/north-island-ty-champs.html>

The **Closing date for receipt of Entries is the 20th of February 2026**

Entrants should note that the Waikato Yacht Squadron reserves the right to cancel the event if insufficient entries are received on or before 20th of February. Notification of cancellation will be sent to those by email who have entered by the date of cancellation.

3.2 Confirmation of Compliance

By entering this race, the person in charge of each boat confirms that the vessel entered to this event fully complies with the requirements of clause 1.2 of this Notice of Race. For the avoidance of doubt, it is the sole responsibility of the skipper to ensure that their yacht and crew meet the requirements of these clauses.

- 3.3** Each skipper shall be a member of any club affiliated to Yachting New Zealand. Indication of affiliated club membership is to be submitted with the entry.

4 SCHEDULE

4.1 Racing Schedule – 21/22 February 2026

Race	Description	Warning Signal
1	Passage Race Circumnavigating Ponui Island (double points)	9:55 Saturday 21
2	Round the Buoys Race 1	9:55 Sunday 22
3	Round the Buoys Race 2	To follow Race 1
4	Round the Buoys Race 3	To follow Race 2
5	Round the Buoys Race 4	To follow Race 3

Note:

A minimum of 3 races total must be completed to constitute a North Island Championship Event

4.2 Briefings

A WhatsApp group called TY North Islands will be used to communicate with race entrants with a written WhatsApp pre-race briefing being made on or before Friday the 20th of February at 18:00 Hours. An additional verbal briefing will be held on VHF channel 77 at 09:30 NZDT Saturday 21 and Sunday 22 of February 2026.

4.3 Sailing Divisions

It is predicted there will be one division for boats entering the North Island Championship.

The WYS reserves the right to create sailing divisions based on the number and range of boat ratings entered. This could include amalgamating divisions. This will be communicated by Friday the 20th of February via WhatsApp.

The Noelex 22 class boats will automatically be entered in both the North Island Trailer Yacht Championship and the North Island Noelex 22 Championship.

Boats may be scrutinised in respect to safety standards, equipment and NZTYA rating standards. For applicants from boats rated below 0.685, skipper and crew experience will determine acceptance.

The Noelex 22 Class committee may decide to inspect Noelex 22 class boats independently.

5 SAILING INSTRUCTIONS

This document includes sailing instructions below. Please read it carefully before starting. Amendments to these instructions may be made in the pre-race briefing by the Race Officer.

6 VENUE

The event will be based out of Kawaka Bay. There are two Boat Ramp facilities available. A public (non floating wharf) ramp, and a club ramp (4 ramps, floating pontoons, breakwater) situated at 1 48/86 Kawakawa Bay Coast Rd. To enable use of the KKBC club ramp a day boat pass is \$20 at - <https://www.kbbc.co.nz/payment>.

Boats may launch from any suitable location and sail to the race area.

Briefings

There will be no physical briefings before each day of the event, other than Digitally via WhatsApp and on VHF 77 at 0930.

Results and Debriefings

Results will be published on the Waikato Yacht Squadron website:

Informal casual debriefings with results will be held at:

Day 1 - A beach (suitably sheltered) near Ponui island

Day 2 - Kawakawa bay Grass area opposite WYS Trailer Yacht Compound (weather permitting)

7 RACING AREA

The racing area will be in the Hauraki Gulf near the south East end of Waiheke Island including the Waiheke Channel, Ponui Island and Kawakawa Bay. See course charts which are shown on this NOR and Appendix 1.

8 THE COURSES

The courses to be sailed will be as follows:

Race 1: A passage race circumnavigating Ponui Island on Saturday the 21st of February.

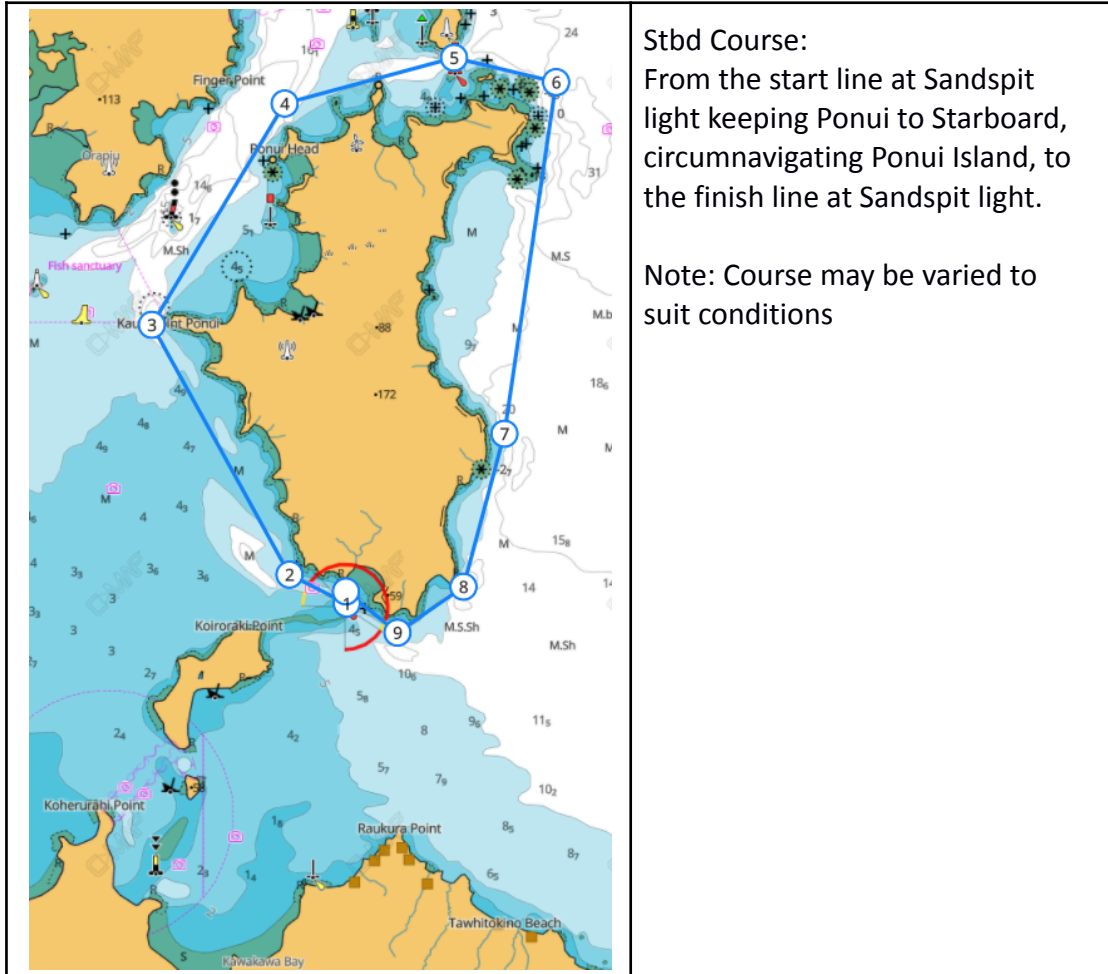
Races 2 to 5: A 4-race Round the Buoys series on Sunday the 22nd of February. The RTB series will be held either in or near Kawakawa Bay or near Passage Rock and the Waiheke Channel. The RTB course area will be announced on or before Saturday the 21st via WhatsApp with a race briefing via Channel 77 at 09:30 on Sunday the 22nd of February.

8.1 RACE 1: Passage Race - PONU CIRCUMNAVIGATION

The Passage race will be around Ponui Island. A full circum-navigation of Ponui island is intended. Other Islands may be included as marks on the course by the Race committee in order to create the correct length course for the wind conditions. The final course will be announced at the race briefing and on WhatsApp.

The attached courses are indicative courses only and may be modified prior to the race briefing.

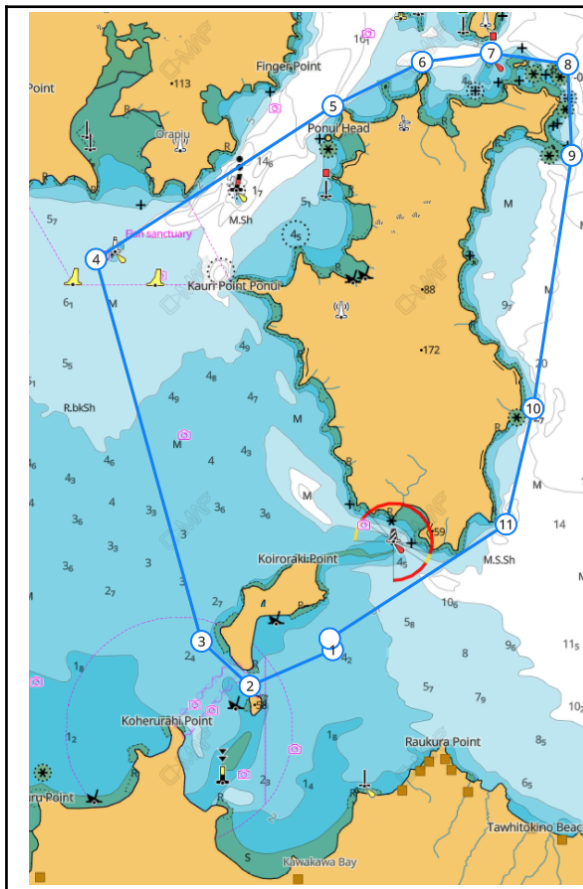
Course A



Stbd Course:
From the start line at Sandspit light keeping Ponui to Starboard, circumnavigating Ponui Island, to the finish line at Sandspit light.

Note: Course may be varied to suit conditions

Course B

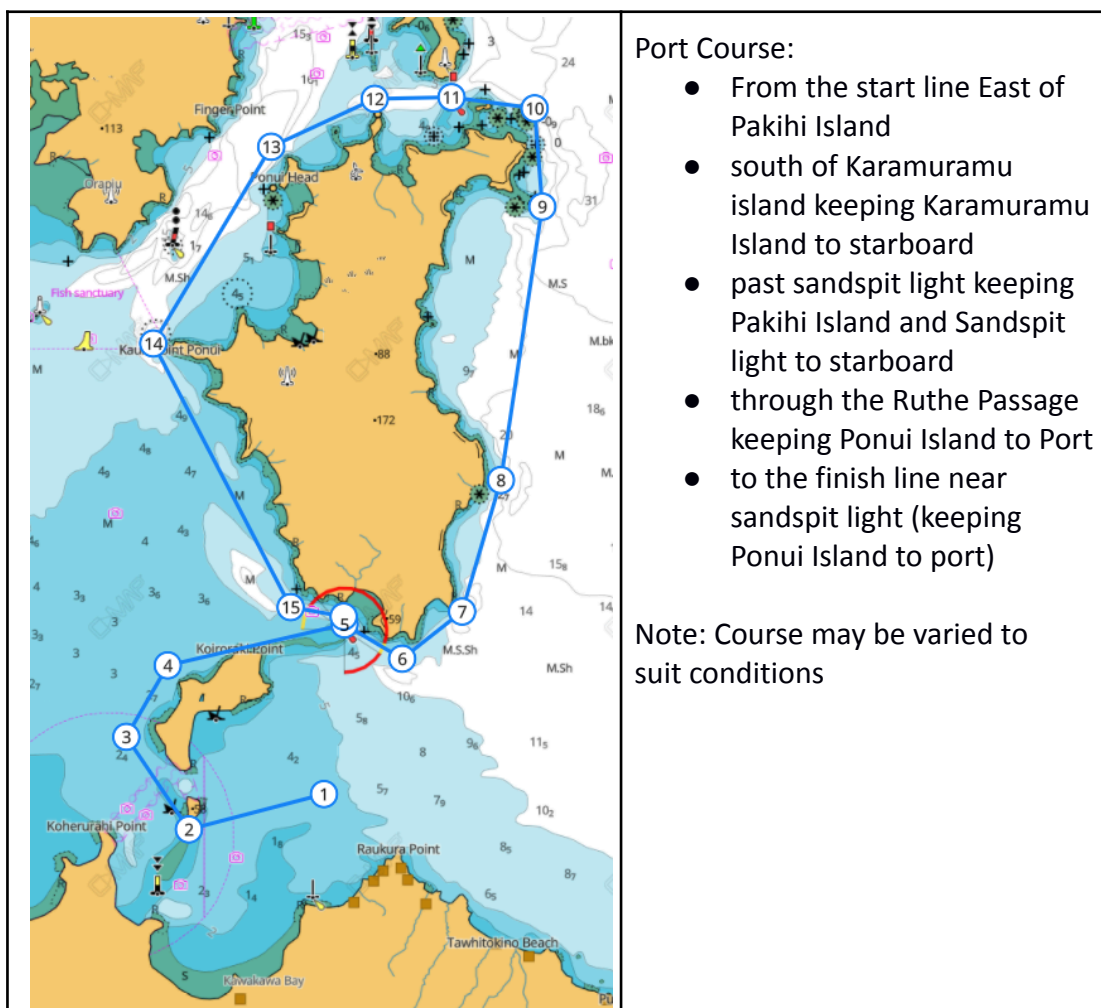


Stbd Course:

- From the start line East of Pakihi Island
- through the gap between Karamuramu island and Pakihi island keeping Pakihi Island to starboard
- past passage rock keeping passage rock to starboard
- through the Ruthe Passage keeping Ponui Island to Starboard
- to the finish line in Kawakawa bay (keeping Ponui Island to starboard)

Note: Course may be varied to suit conditions

Course C



Port Course:

- From the start line East of Pakihi Island
- south of Karamuramu island keeping Karamuramu Island to starboard
- past sandspit light keeping Pakihi Island and Sandspit light to starboard
- through the Ruthe Passage keeping Ponui Island to Port
- to the finish line near sandspit light (keeping Ponui Island to port)

Note: Course may be varied to suit conditions

Course D

TBA	Port Course: TBA
-----	---------------------

8.2 These courses described herein shall be sailed in either an anticlockwise direction (Port Course) or a clockwise direction (Starboard Course), depending on wind direction. The direction to be sailed shall be identified by WhatsApp and radio briefing.

9 ROUND THE BUOYS SERIES

9.1 The course to be sailed will be a Windward - Leeward course with NO windward offset and a Leeward finish.

- 9.2 The marks and number of laps of each course will be advised by radio briefing.
- 9.2 The target time for each race is 30 minutes
- 9.3 On the last scheduled day of racing no warning signal will be made after 15:30.
- 9.4 RRS 35 and A5 will be changed to state that boats still racing but failing to finish within 15 minutes after the first boat sails the course and finishes will be scored "did not finish" DNF.
- 9.5 RRS A5 will further be changed to state that a boat starting later than 4 minutes after her starting signal will be scored Did Not Start, DNS
- 9.6 Flotation Devices. RRS 40.1 shall always apply while racing.
- 9.7 Support person vessels are not allowed.

10 SCORING

- 10.1 The Low Point Scoring system will be used.
- 10.2 Ratings for calculating corrected times will be based on the boat rating assigned by NZTYA (Trailer Yachts) or as amended by WYS Race Committee.
- 10.3 The Ponui Passage race shall count for double points.
- 10.4 A boat's series score will be the total of her race scores, with the Ponui Passage race score being doubled, excluding her worst score (1 discard) when 4 or more races are completed. The Passage race score cannot be discarded. This changes RRS A2.1."

11 PENALTY SYSTEM

- 11.1 Two-turns penalty for Racing rule 44.1 is replaced with:
A boat may take a **one-turn Penalty** when she may have broken one or more rules of Part 2 in an incident while racing.

12 RADIO COMMUNICATION

- 12.1 Except in an emergency, a boat that is racing shall not make voice or data transmissions and shall not receive voice or data communication that is not available to all boats.

13 POSITION REPORTING FOR PASSAGE RACE

- 13.1 For safety reasons, increased interest in online viewing of the race, and developing race organization practice, each entrant is required to use the **Predict Wind Race tracking** service. To use the service, you will need a smartphone that use either iOS16 and above or Android 8 and above operating system. The **Predict Wind Race Tracking** service is being made available at no cost to each competitor.

Full instructions on how to install and use the app will be provided by request.

13.2 **VHF Contact**

VHF contact between the Waikato Race Control will be via VHF Channel 77.

13.4 Backup Messaging

In addition to the VHF contact, all entrants will be required to have the WhatsApp messaging service on their mobile phones. Race control will have all skippers registered on this app and any change to course will be advised.

15 PRIZES

15.1 WYS will run these events as part of its normal sailing program. These races will double as standard WYS events WYS members will receive series points as stated in the 25/26 club handbook.

15.2 The North Island TY Championship will be awarded to the boat with the lowest score across the regatta (noting section 10). The North Island TY Championship races will be raced as one division, unless significant entries are received requiring the use of divisions. Three races must be completed for the championship to be awarded. The winner will be announced at a small gathering in Kawakawa bay on Sunday 22nd February (should weather allow). The winner will also be announced via WhatsApp and Facebook on Monday the 23rd of February (at the latest).

15.3 The North Island Noelex 22 Championship will be awarded to the Noelex 22 with the lowest score across the regatta (noting section 10).

16 SOCIAL EVENT – POST PASSAGE RACE

16.1 Following the passage race, a social evening BBQ will be held on a beach. This will be a relaxed, bring-your-own (BYO) food and drink event, with a BBQ available for your use. All entrants are encouraged to join in. The exact location and start time will be based on the most suitable anchorage for the following morning's races. It will be a bay near Ponui island. Details will be shared via VHF Channel 77 and WhatsApp.

17 INSURANCE

17.1 Each participating boat shall be insured with valid third-party liability insurance to minimum cover of \$1,000,000.

18 DISCLAIMER OF LIABILITY

18.1 Competitors participate in the regatta entirely at their own risk. See RRS Rule 3, Decision to Race. The organising authority will not accept any liability for material damage or personal injury or death sustained in conjunction with or prior to, during, or after the regatta.

18.2 FURTHER INFORMATION

18.3 For further information please contact:

The Waikato Yacht Squadron

Email: waikatoyachtsquadron@gmail.com

Entry forms are available at:

<https://www.waikatoyachtsquadron.org.nz/north-island-ty-champs.html>

Appendix 1 – RTB Sailing Area Map

Course Area to be advised on Saturday the 21st. Red circles show the two potential RTB racing areas.

