

# 44th WAIKATO YACHT SQUADRON GULF CLASSIC

## 21st – 22nd March 2026

The Organising Authority is The Waikato Yacht Squadron,  
P O Box 4263, Hamilton East, New Zealand

### **NOTICE OF RACE**

#### **1 RULES**

**1.1** The regatta will be governed by the rules as defined in YNZ *The Racing Rules of Sailing 2025-2028* (RRS). The rules of individual yacht classes shall apply, except as any of these are altered by the Notice of Race or Sailing Instructions.

#### **1.2 Yachting New Zealand Safety Regulations Shall Apply as Follows**

##### **Trailer Yachts**

All Trailer Yacht designs as approved by the New Zealand Trailer Yacht Association (NZTYA) may enter and shall comply with the Yachting New Zealand Safety Regulations Part V - Trailer Yachts - Category B. These regulations take precedence over individual class rules.

##### **Keelboats**

All Keelboats shall comply with Category 4 of the Yachting New Zealand Safety Regulations Part II (Offshore & Coastal Racing & Cruising), with the exception that a life raft or dinghy is not required.

##### **All Yachts**

All yachts shall carry an operating and functional marine VHF transceiver, capable of transmitting and receiving on Channels 16, 77, 62, which shall remain switched on and tuned to the appropriate channel, always monitored by the crew on board and available for use. All yachts shall carry an up to date version of Chart NZ 532 (Approaches to

Auckland) and Chart NZ 5324 (Tamaki Strait and Approaches including Waiheke Island) or equivalent digital chart suitable for marine use.

A yacht sailing two-handed in the Keeler division shall be fitted with jackstays pursuant to Clause 17.23 (K) and 17.28 (c)(m) of the YNZ Safety Regulations Part II (Offshore & Coastal Racing & Cruising) and two safety harnesses pursuant to SR Appendix 3 of the YNZ Safety Regulations Part II (Offshore & Coastal Racing & Cruising).

A yacht sailing two-handed in a Trailer Yacht division shall be fitted with jackstays or alternative means of securely attaching a safety harness while working on deck.

RRS Rule 52 is amended to permit the use of self-steering devices.

All yachts shall, upon request, make themselves available for inspection for compliance with safety regulations. A yacht may also be inspected after the race.

### **1.3 Equipment Rules / Ratings**

Corrected times for trailer yachts shall be calculated from current ratings published by the NZTYA. The Race Committee reserves the right to assign a rating and Race Division for these entrants. The Race Committee also reserves the right to refuse any entry and/or to amend the rating of any yacht.

Waikato Yacht Squadron will assign Keelboat ratings for this event. Recent club racing handicap history and PHRF ratings (where applicable) are to be supplied on the entry form.

The Race Committee's decision on ratings shall be final, and no discussion will be entered into.

**1.4** Appendix T (Arbitration) of the RRS will apply.

## **2 ADVERTISING**

**2.1** Competitor advertising will be restricted as follows:  
Competitor advertising shall not conflict with advertising by the race sponsors or the Club sponsors.

**2.2** Boats may be required to display advertising chosen and supplied by the organising authority. If this rule is broken, World Sailing Regulation 20.9.2 applies (Discretionary Penalty).

## **3 ELIGIBILITY AND ENTRY**

**3.1** The regatta is open to Keelboats and Trailer Yachts. The minimum crew is two persons (including the skipper) over the age of 16 years, unless otherwise specified by the class rules. Classes with class rules specifying the minimum crew must abide by their class rule.

Please submit entries **online** on the Official Entry Form which is available on the website [www.waikatoyachtsquadron.org.nz](http://www.waikatoyachtsquadron.org.nz)). **Please complete in full.**

The entry fee is \$70.00 which is to be paid electronically at the time of submitting the entry.

Payment should be made to:

The Waikato Yacht Squadron, **ASB account number: 12-3171-0044255-000.**  
Please quote the Boat Name and Sail Number as the payment reference.

If you are unable to submit your entry or to make payment online, please contact the Gulf Classic Committee by email at [gulfclassic100@gmail.com](mailto:gulfclassic100@gmail.com) so that alternative arrangements can be made.

**The Closing date for receipt of Entries is Thursday 19th March 2026**

Entrants should note that the Waikato Yacht Squadron reserves the right to cancel the event if insufficient paid entries are received on or before 15th March 2026. If the event is cancelled for this reason all entry fees will be refunded. Notification of cancellation will be sent to those who have entered by the date of cancellation.

An entrant who has paid the entry fee and withdraws from the event will be refunded the full entry fee, provided the Waikato Yacht Squadron receives such notice of withdrawal on or before 1<sup>st</sup> March 2026. No refund will be given for any withdrawal received after that time.

### **3.2 Confirmation of Compliance**

The person signing an entry form thereby confirms that the vessel entered to this event fully complies with the requirements of clause 1.2 of this Notice of Race. For the avoidance of doubt, it is the sole responsibility of the skipper to ensure that his or her yacht and crew meets the requirements of these clauses.

- 3.3** Each skipper shall be a member of any club affiliated to Yachting New Zealand. Indication of affiliated club membership is to be submitted with the entry.

## **4 SCHEDULE**

### **4.1 Registration**

A registration desk will be in the upstairs lounge at the Maraetai Beach Boating Club on the evening of Friday 20<sup>th</sup> March 2026. All skippers (or a skipper's representative) are required to sign the register and confirm entry details with the Race Committee Secretary at the Registration Desk between 1830 hours and 2030 hours. Attendance at the briefing is strongly recommended for all skippers and crew. Race entrants that do not attend the briefing are still required to sign the register and any disclaimer

and confirm your entry details with the Race Committee Secretary at the Maraetai boat ramp between 0800 hours and 0830 hours on Saturday 21<sup>st</sup> March 2026.

Should any boat attempt to participate in the race without completing this formality its result will be recorded as DNS (Did Not Start).

#### **4.2 Briefing**

The pre-race briefing will be held in the downstairs lounge at the Maraetai Beach Boating Club commencing at 2030 hours NZDT Friday 20<sup>th</sup> March 2026.

#### **4.3 Sailing Divisions**

Divisions starting 21<sup>st</sup> March 2026:

- Division K - Open to Keelers with a PHRF rating registered with YNZ.
- Division A - TY 65 – Open to Trailer Yachts with NZTYA rating of 0.885 and above
- Division B - TY 60 – Open to Trailer Yachts with NZTYA rating of 0.790-0.884
- Division C - TY 40 - Open to Trailer Yachts with NZTYA rating of 0.685 - 0.810

*(Entry to division C for less experienced skippers with higher boat ratings or for experienced skippers with lower boat ratings will be considered on application to the race committee)*

The race committee reserves the right to adjust the rating of any boat for this event. Boats may be scrutinised in respect to safety standards, equipment and NZTYA rating standards. For applicants from boats rated below 0.685, skipper and crew experience will determine acceptance.

Division Keelers will race on course K.

Division A Trailer Yachts will race on course A.

Division B Trailer Yachts will race on course B.

Division C Trailer Yachts will race on course C.

Courses may be amended or shortened by the race officer.

**4.4** The scheduled date and time of the first division warning signal is 0955 hours on 21<sup>st</sup> March 2026.

**4.5** Waikato Race Control reserves the right to amalgamate divisions in the event of insufficient entries being received for any single division.

## **5 SAILING INSTRUCTIONS**

A draft copy of the Sailing Instructions will be provided upon receipt of entry. A final version will be made available at the briefing. This document provides important information for all participants. Please read it carefully before starting. The sailing instructions will be on the official notice board located at Maraetai Beach Boating Club, 188 Maraetai Drive, Maraetai Beach, Auckland.

## 6 VENUE

The event will be based out of the Maraetai Beach Boating Club (MBBC) situated at 188 Maraetai Drive, Maraetai Beach, Auckland.

Maraetai Boating Club will supply catering for the Friday night briefing and Sunday morning breakfast and prize-giving. Meal tickets can be purchased.

Trailer Yachts may park and launch from the MBBC boat ramp.

## 7 RACING AREA

The racing area will be within the Inner Gulf. See attached course charts which are shown on this NOR as Appendix 1.

## 8 THE COURSES

The courses to be sailed will be as follows:

The courses described herein shall be sailed in either an anticlockwise direction (Port Course) or a clockwise direction (Starboard Course), depending on wind direction. The direction to be sailed shall be identified by the Committee Boat flying a red flag (Port Course) or a green flag (Starboard Course).

The descriptions below indicate the Port Course for each.

**Port Course K** — approximately 80 nautical miles.

From START, to sandspit Passage leaving Ponui to PORT.

Thumb Point (Waiheke Is) to PORT.

To Whangaparaoa Navy Buoy to PORT.

To the Rakino Channel, Rakino Island to PORT, Motutapu Island to STBD.

Through the Motuihe Channel, Motuihe Island to PORT, Motutapu Island to STBD.

Rangitoto Island and Motutapu Island to STBD.

To and rounding Rakino Island to STBD.

Through Sergeant Channel.

To FINISH.

**Port Course A** — approximately 65 nautical miles.

From START, through Sandspit passage then keeping Ponui Island, Rotoroa Island and Pakatoa Islands to PORT.

Thumb Point (Waiheke Island) to PORT.

To Rakino Channel leaving Motutapu Island to PORT and Awash Rock to STBD.

Around Rakino Island to STBD.

Through the Motuihe Channel, Motuihe Island to PORT, Motutapu Island to STBD.

Rounding Rangitoto Island and Motutapu Island to STBD.

Through Rakino Channel with Rakino Island to PORT.

Through Motuihe Channel, passing Motuihe Island to PORT, Browns Island to STBD.

To FINISH.

**Port Course B** — approximately 60 nautical miles.  
From START, leave Passage Rock to PORT.  
Through Waiheke Channel and through the Ruthe Passage.  
Thumb Point (Waiheke Island) to PORT.  
To Rakino Channel leaving Motutapu Island to PORT and Awash Rock to STBD.  
Around Rakino Island to STBD.  
Through the Motuihe Channel, Motuihe Island to PORT, Motutapu Island to STBD.  
Rounding Rangitoto Island and Motutapu Island to STBD.  
Through Rakino Channel with Rakino Island to PORT.  
Through Sergeant Channel.  
To FINISH.

**Port Course C**— approximately 40 nautical miles.  
From START, leave Passage Rock to PORT.  
Through the Waiheke Channel, Waiheke Island to PORT, Ponui Island, Rotoroa Island and Pakatoa Island to STBD.  
Leave Waiheke Island to PORT, to Rakino Channel leaving Motutapu to PORT and Awash Rock to STBD.  
Around Rakino Island to STBD.  
Through Sergeant Channel.  
To FINISH.

## **9 PENALTY SYSTEM**

- 9.1** Two-turns penalty for Racing rule 44.1 is replaced with:  
A boat may take a **one-turn Penalty** when she may have broken one or more rules of Part 2 in an incident while racing.

## **10 SCORING**

- 10.1** The Low Point Scoring system will be used.
- 10.2** Ratings for calculating corrected times will be based on the boat rating assigned by NZTYA (Trailer Yachts) or as amended by WYS Race Committee, and for keelboats as assigned by WYS race committee from PHRF ratings advised on the entry form for Keelboats.

## **11 RADIO COMMUNICATION**

- 11.1** Except in an emergency, a boat that is racing shall not make voice or data transmissions and shall not receive voice or data communication that is not available to all boats.

## 12 POSITION REPORTING

**12.1** For safety reasons, increased interest in online viewing of the race, and developing race organization practice, each entrant is required to use the **Predict Wind Race tracking** service. To use the service, you will need two smartphones (one as a back-up) that use either iOS16 and above or Android 8 and above operating system. The **Predict Wind Race Tracking** service is being made available at no cost to each competitor.

**Full instructions on how to install and use the app will be detailed in the Sailing Instructions that will be sent out on receipt of entry.**

### **12.2 VHF Contact**

VHF contact between the Waikato Race Control and the competitors on VHF Channel 77 can be difficult at times depending on the competitor's location in the Gulf. For ten minutes following the start and before the finish, competitors should monitor Channel 77 for instructions and reporting. For general safety after the start, competitors are to maintain watch on Channel 62 for reporting their position at the VHF check-in point, as well as for receiving any instructions for changes to the Sailing Instructions or courses.

### **12.3 Backup Messaging**

In addition to the VHF contact, all entrants will be required to have the WhatsApp messaging service on their mobile phones. Race control will have all skippers registered on this app and any change to course will be advised on this medium as a backup to any coastguard communication. Skippers should acknowledge receiving any WhatsApp message altering the course for their division.

## 13 RADIO SCHEDULES AND WAYPOINT IDENTIFICATION CHECKS

**13.1** All entrants shall identify themselves to Coastguard Radio as a "Gulf Classic Competitor", BY VHF RADIO Ch 62 at the passing of the following waypoints on their course:

<b>Division</b>	<b>Port Course</b>	<b>Starboard Course</b>
Keeler	Whangaparaoa Navy buoy Home Bay Motutapu	Rangitoto Light Whangaparaoa Navy buoy
TY 65	North Point of Rakino Island	North Point of Rakino Island
TY60	North Point of Rakino Island	North Point of Rakino Island
TY 40	Thumb Point-Waiheke Island	North Point of Rakino Island

## **14 PRIZES**

**14.1** Prizes will be given as follows: Race prizes shall be awarded for line honours and the first place on corrected time in each division. Where 3 or more class boats race each other in any division, then a class prize will be awarded. Division trophies will be awarded to the winner on corrected time in each division.

### **14.2 Club Challenge Trophies**

There are two Challenge trophies for interclub competition, one for Keelboats and one for Trailer Yachts. These trophies are open to any club affiliated to Yachting New Zealand. The winning club will have the best four results from any boats in their club as declared on the entry form.

**14.3** All skippers and crew members participating in the race and **present at prize-giving** will be entered in a draw for spot prizes. Only one spot prize per person will be awarded.

## **15 INSURANCE**

**15.1** Each participating boat shall be insured with valid third-party liability insurance to minimum cover of \$1,000,000.

## **16 DISCLAIMER OF LIABILITY**

**16.1** Competitors participate in the regatta entirely at their own risk. See RRS Rule 3, Decision to Race. The organising authority will not accept any liability for material damage or personal injury or death sustained in conjunction with or prior to, during, or after the regatta.

## **17 FURTHER INFORMATION**

**17.1** For further information please contact:

The Gulf Classic Committee, Waikato Yacht Squadron  
Email: [gulfclassic100@gmail.com](mailto:gulfclassic100@gmail.com)

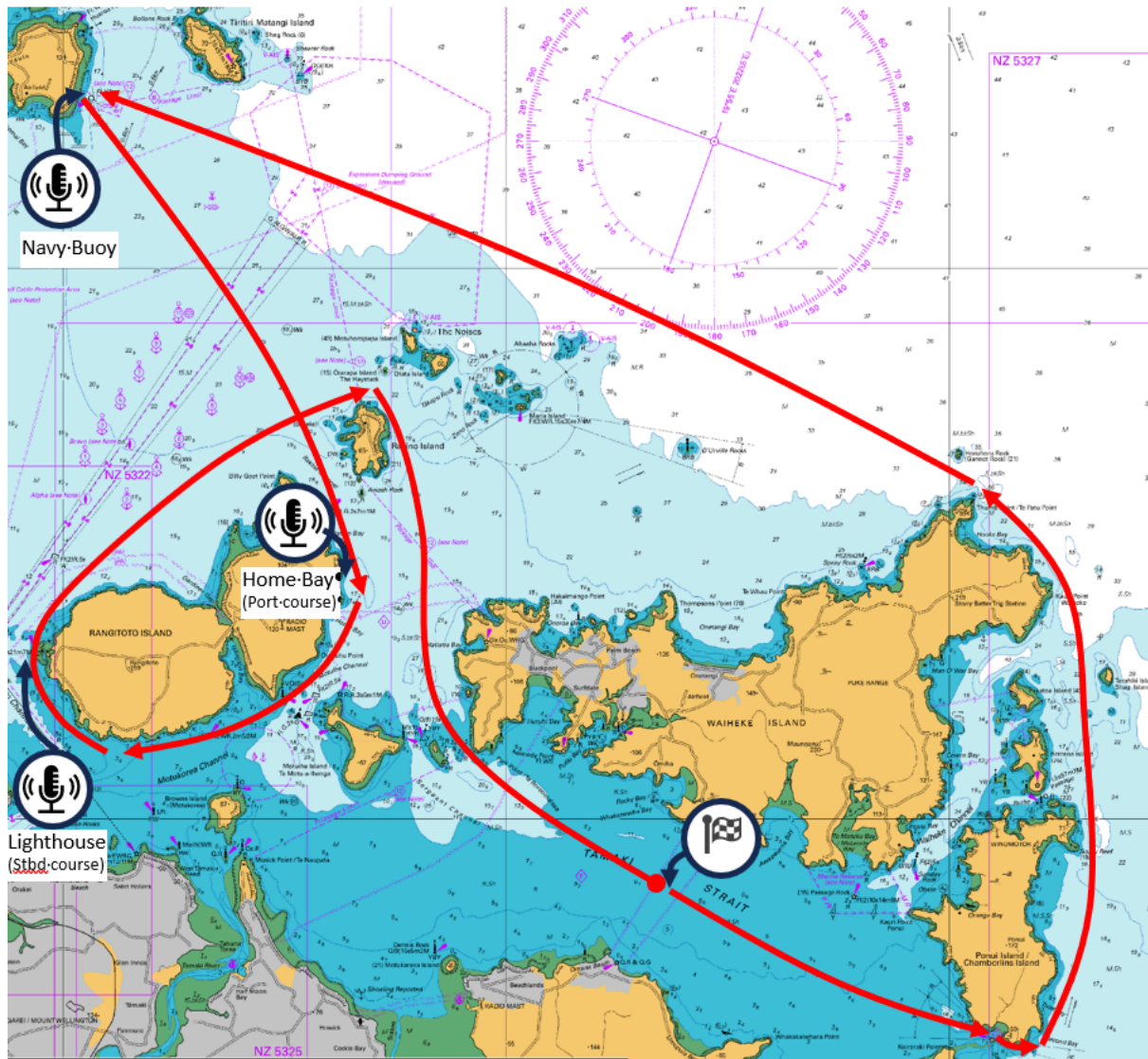
Entry forms are available via this [link](#)

Website: <https://www.waikatoyachtsquadron.org.nz/gulf-classic-2026.html?s=nor>

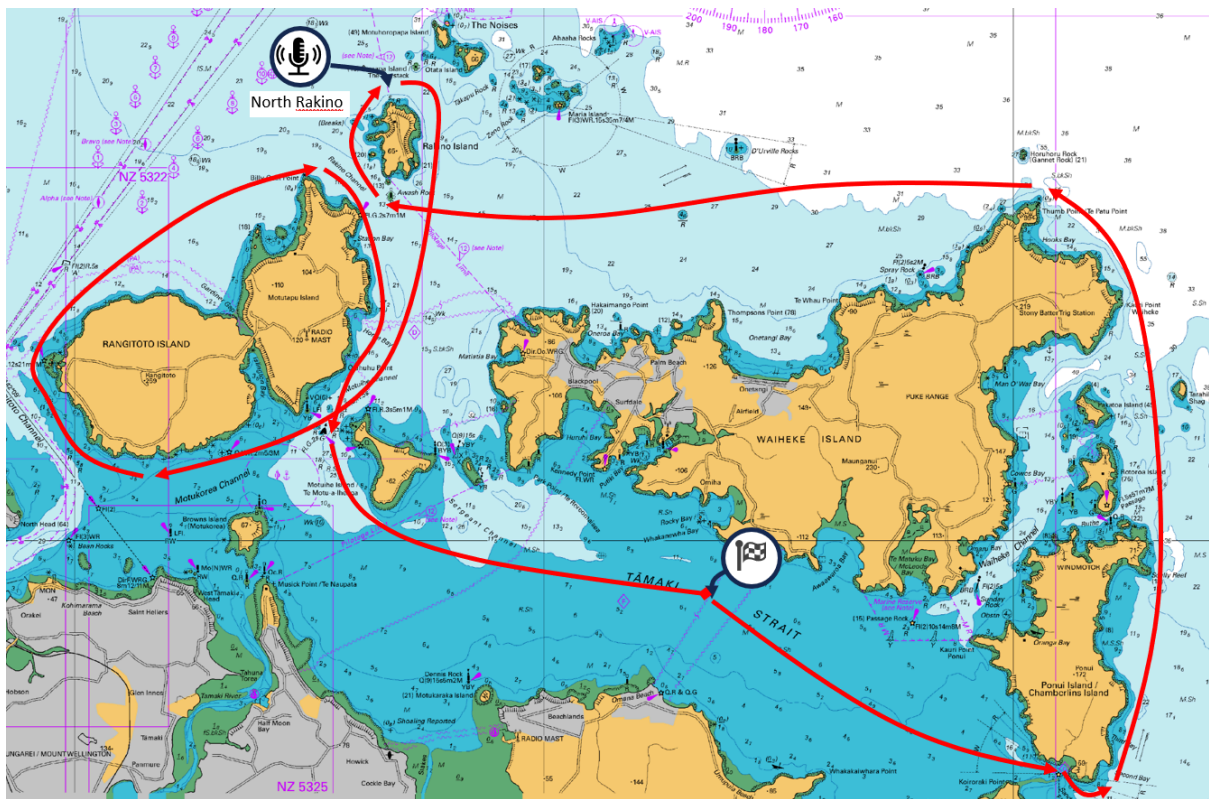
Facebook: <https://fb.com/gulfclassicregatta>

# Appendix 1 - Course Maps

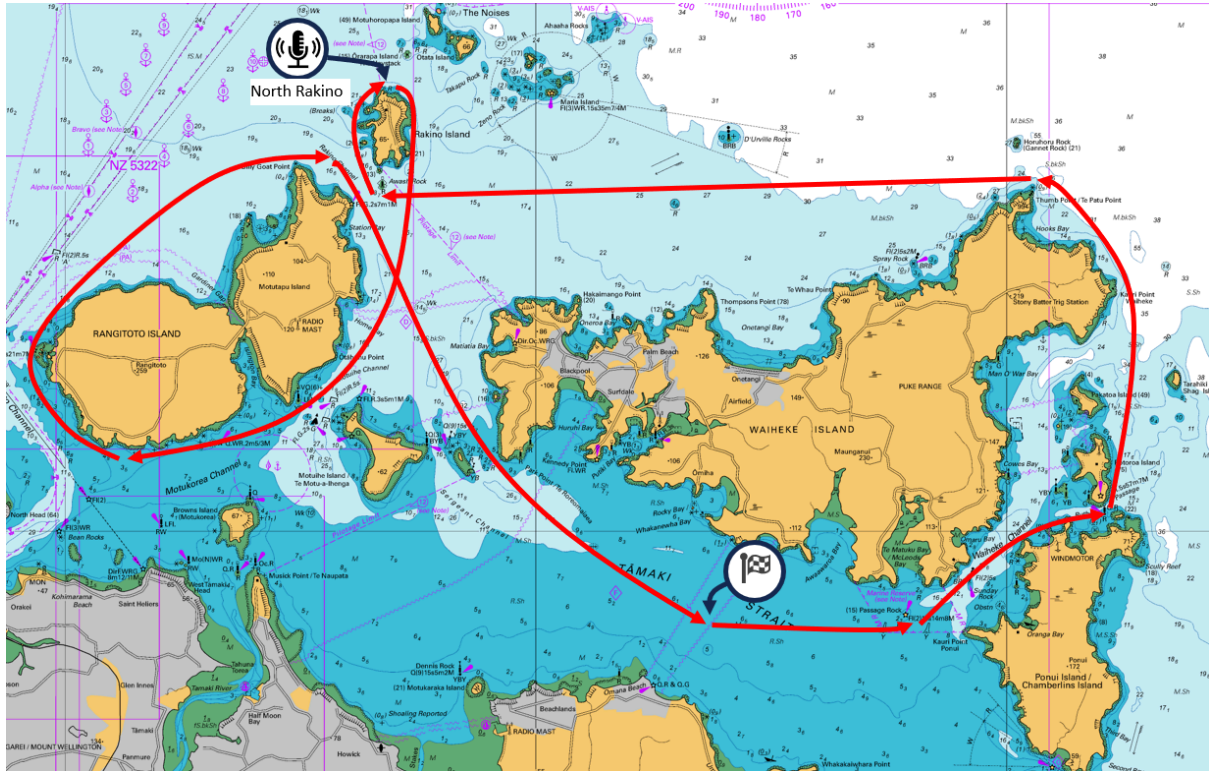
## Course K - Keelers



Course A - TY65



Course B - TY60



Course C - TY40

