

Bilgewater

October 2020



Kittiwake, Bryants Bay, Ponui Island





Bilgewater October 2020

Committee Members

Committee Member	Portfolio	Contact
James Hepburn	Commodore Race Officer Trailer Yachts Bilgewater	021 477 324
Wayne Johnstone	Vice Commodore Compound Convener Quartermaster	027 623 6366
Jim Pasco	Treasurer	021 143 1199
Greg Reeve	Secretary Handbook	
Russell Osborne	Webmaster/Facebook	021 056 4551
Murray Pearce	Sponsorship liaison Gulf Classic convener Race Officer Keeler	0274 951 223

Non Committee Members

Dean Herrmann	Safety, Tuition	0274 374 001
Dave Whitburn	Compound Manager	09 292 2073
Brett Goddard	NZTYA and WTYA liaison	

<http://www.waikatoyachtsquadron.org.nz>

waikatoyachtsquadron@gmail.com

P. O. Box 4263
Hamilton East
Hamilton 3247



Auto Trail Ltd

Automotive, Trailer & Tractor Spares, Accessories and Tools,
Oil & Lubricants



Bilgewater October 2020

Commodore's Report

Commodores report

With not much happening on the water (yet), I thought I would use this opportunity to let you all know about some of the things happening in the background.

The new committee has been meeting monthly and I feel we are making good progress. This time of year is always a very busy time for the committee as we organise the programme for the year, manage memberships, organise the compound, and a myriad of other admin jobs to get ourselves set up for the new season. Particular praise has to go to Greg. He has taken on the role of Secretary this year and has been doing an outstanding job. Greg and Wayne have also been organising the compound which has been great.

We have also formed a new Gulf Classic committee. This year we have Murray chairing this committee with assistance from Roland, Wayne, Jim, and myself. We are also grateful for the assistance from a group of other club members as well as a few people from outside of the club who have taken on specific roles in the management and promotion of this event. This year's Gulf Classic is set to be a great one and hopefully the Hauraki Gulf will be fizzing with sailing action. This year the race is going to be held on the 27th of February. This is slightly earlier than usual to avoid clashing with events at other clubs, and of course to avoid clashing with the America's Cup. More information will be released shortly so keep an eye out.

The final committee that has been formed is the Trailer Yacht handicapping committee. At this stage Hugh and myself will be managing this aspect of the clubs sailing programme. It would be great to have one more person. We will be having our initial meeting shortly to thrash out the details of how this will be managed this season. More information about handicapping can be found towards the end of this month's Bilgewater.

The summer season is about to start. Included in this Bilgewater is the notice of race for the Rocky Bay race for Trailer Yachts and the Kawau Island race for Keelers. We have also included some info about the Barrier cruise as well as some other sailing events at other clubs.

Finally, we have an interesting guest speaker for this month's nog-n-natter so that should be well worth attending. We will have completed our first event of the year by then so it will also be a great opportunity to share tall tales of our sailing exploits.

I look forward to seeing many of you out on the water.

James





Bilgewater October 2020

Upcoming Events

Sailing Events

Kawau Island race for Keelers - Saturday 24th October

Rocky Bay race for Trailer Yachts - Saturday 24th October

Ngaroto sprint racing - 7th and 8th November

Great Barrier cruise - Saturday 14th November

Rotoiti Classic - Saturday 21st November

Nog n Naten

Murray Binden - Tuesday 27th October 7:30pm

We are fortunate to have Murray Binden as our speaker in October. Murray refurbished a large 58ft keel boat in Mexico, and then set out to sail her back to NZ. Between the Cooks and Tonga they experienced an on board fire that completely destroyed the vessel, and left Murray and his crew floating in the South Pacific ocean.

Murray will talk to us about his experience, the voyage, the fire, and the rescue.

Let's have a great turnout, from 7.30 at the Hamilton Yacht club rooms at Innes Common.





Bilgewater October 2020

Notice of Race

KAWAU ISLAND - Keeler Division

DATE: Saturday 24th October 2019

START TIME: 1030 hours from the start line off Pine Harbour Marina. Start sequence will be as described in the Racing instructions in the club handbook.

RACING INSTRUCTIONS: shall be in accordance to the "standard instructions for non-regatta races" except for those that are altered by these sailing instructions.

ENTRIES: To the race coordinator by VHF channel 77 by 1000 hours advising name of yacht and number of crew on board.

DIVISIONS: The race will consist of one keeler division.

RACE BRIEFING: Will be held at 1005 hours by VHF radio channel 77 where the race officer will advise of any changes to the course or racing instructions

COURSE: From the start line outside Pine Harbour, to a finish line off Martello Rock, Kawau Island. There are no fairway marks. The course is designated Course 1 in the club sailing programme and shown in the handbook.

START LINE: Will be between the nominated start boat and the first starboard channel marker if you were entering the Pine Harbour marina entrance channel

FINISH LINE: A line between Martello Rock and the Haystack outcrop before the west end of Mansion House Bay, Kawau Island. All yachts will record their own finish time according to GPS time in hrs/min/sec and where possible record the name of the yacht finishing immediately in front and behind them. They should, then, advise the race officer of their finish time after the race officer has completed the course.

DINGHIES: No dinghy allowance will be made

RACE OFFICER: Murray Pearce - Afterguard

An evening get-together followed by dinner at the Kawau Island Boat Club for all skipper and crew, gathering from 1730hrs (subject to any race officer amended instruction)

Any yacht wanting to participate in the gathering, but not the race, are most welcome.

While you're towing it or blowing it your pride and joy is fully protected by the **NZTYA Insurance Scheme**

Crombie Lockwood has been managing insurances for the NZTYA for over 30 years and every premium goes back to your association.

The exclusive Trailer Yachting Package includes:
Wind, geographic limits, towing gear, accidental theft, racing and on-road rules, third party liability, and Accidental Death/Over.

Go to <http://www.traileryachts.org.nz/nztya-insurance/> for details or for personal expert advice contact andie.buller@crombielockwood.co.nz or call Andie on 07 579 7019


AN ARTHUR J. GALLAGHER COMPANY www.crombielockwood.co.nz

NEW ZEALAND'S NATURAL COVER



Bilgewater October 2020

Notice of Race

Rocky Bay – Trailer Yacht Division Division

DATE: Saturday 24th October 2019

START TIME: 1030 hours from the start line off Ammunition Bay Wharf. Start sequence will be as described in the Racing instructions in the club handbook.

RACING INSTRUCTIONS: shall be in accordance to the “standard instructions for non-regatta races” except for those that are altered by these sailing instructions.

ENTRIES: To the race coordinator by VHF channel 77 by 1000 hours advising name of yacht and number of crew on board.

DIVISIONS: The race will consist of two division.

RACE BRIEFING: Will be held at 1005 hours by VHF radio channel 77 where the race officer will advise of any changes to the course or racing instructions

COURSE: From the start line off the Ammunition Bay wharf - to the Rocky bay yellow race buoy to STB - to the Waiheke Channel keeping Passage Rock to STB – to the finish line at a transit between Orapiu Wharf and Sunday Rock in the Waiheke Channel. The course is designated Course 2 in the club sailing programme and shown in the handbook.

START LINE: Will be between the nominated start boat and the Ammunition Bay wharf.

FINISH LINE: A transit line directly off the Orapiu wharf in the Waiheke Channel. All yachts will record their own finish time according to GPS time in hrs/min/sec and where possible record the name of the yacht finishing immediately in front and behind them. They should, then, advise the race officer of their finish time after the race officer has completed the course.

DINGHIES: Dinghy allowance will be made

RACE OFFICER: James Hepburn

An evening get-together at a suitable anchorage within the Waiheke Channel will be advised at the race briefing.

Any yacht wanting to participate in the gathering, but not the race, are most welcome.



Bilgewater October 2020

Gt Barrier Cruise 2020

Our Gt Barrier Cruise this year is due to get underway on Saturday 14 November with all boats, that is trailer yachts and keelers, that are participating, launching and gathering during the course of the day at Chamberlains Bay Ponui Island.

Your cruise co-ordinator is Jim on Acushla who will be available on Ch 77 or mobile 0211431199 .

If you are participating this year please message me on the above number to confirm your intent any time beforehand so we have a feel for numbers.

Weather permitting we plan to get underway at 0930 hrs on Sunday morning heading for Tryphena Harbour Gt Barrier Island. This is approx 35 nm and you should allow for a full eight hours sailing, motor sailing if necessary to get in before dark.

Monday morning we plan to have breakfast at the Mulberry Grove Restaurant starting at 0930 hrs followed by a look round Mulberry Grove and surrounding area before lunch on the boats. After lunch setting sail for Whangaparapara a further 8 nm up the coast. Overnighting in this small but safe anchorage. There is a motel at the head of the bay for those that would like to breakfast or lunch here. There are also numerous hiking tracks on Barrier and its surrounds if you wish to stay longer here.

Tuesday after lunch head out for the Broken Islands heading for Man-O-War Passage and the entrance to Port Fitzroy and Smoke House Bay. If you are unfamiliar with the entrance to the Broken Islands from the south let me know so that we can arrange for your guidance.

Remember to listen in to Channel 77 at 0900 hrs and 1600 hrs for any Squadron messages as to the any planned activities for the day/evening.

Smoke House Bay now has a Pizza oven so bring some Pizzas with you for eats in the evening. As well as this the bay has a hot water bathing facility for use by all that is heated by the back boiler outside the hut. This boiler does not light and fuel itself so if you use it then be prepared to gather fuel and keep it alight for the use of all of us. The same goes for the Pizza oven with lighting and fueling.

There are four BBQ pits available at the Bay for everybody to use where you can cook your catch of the day, or steaks or snags as you wish.

At the end of our stay we want to be able to say that we left all the facilities in as good or better condition than when we arrived.

There are now no rubbish collection sites on Gt Barrier so you are required to take away with you everything that you bring to the Island.



Bilgewater October 2020

From Your Race Officer..... Handbook Corrections and Sailing Handicaps

Following publication of the handbook a small number of corrections need to be made. These primarily relate to the small charts showing our race-tracks for various events. Unfortunately, they do not quite line up with the course numbers shown in the events programme. So, I have attached updated course charts for Course 4 (Hooks Bay); Course 5 (Motuihe); Course 6 (Tarahiki); and Course 7 (Coromandel). Please use these to identify your sailing area for these events. Note that these are indicative charts of your sailing area and should not be used for navigation purpose.

Your sailing handicap officers this season are James Hepburn and Hugh Beecroft for the trailer yacht division, and Jim Pasco and me for the Keeler division. Because of the shortened race programme last season, we have decided to use the last reviewed personal handicap to start off this season sailing programme. If you are new to the squadron, we start you off on a handicap of 1.00, until we can assess your overall sailing ability. By way of reminder, and particular for new members, here is a quick summary of our club handicap system.

1. Calculation of corrected time where results go toward the squadron OPEN championship trophy – your elapsed time from start to finish is adjusted by your boat rating. Boat ratings are calculated and overseen by NZTYA for the trailer yachts, and YNZ PHRF ratings for the keeler fleet. There is no review of these ratings during the season, by your club handicappers.
2. Calculation of handicap times where results go toward the squadron HANDICAP championship trophy – your elapsed time is adjusted by your boat rating to give a corrected time, then this corrected time is adjusted by your personal handicap to calculate a handicap time. Personal handicap is set by the club handicappers and is reviewed regularly based on your as-sailed time. These are calculated from the average finishing time of your fleet.
3. It is the intention of the personal handicap review process to give everyone, both experienced and less experienced skippers, a fair chance of placing well in any event, provided they sail to the best of their ability.
4. Race day prize giving is all based on handicap times.
5. For this season, the range for personal handicaps will be increased from 0.95 through to 1.10, with a handicap of 1.00 leaving your personal handicap the same as your boat rating.

Hope to see you all out for our first event at Labour Weekend.

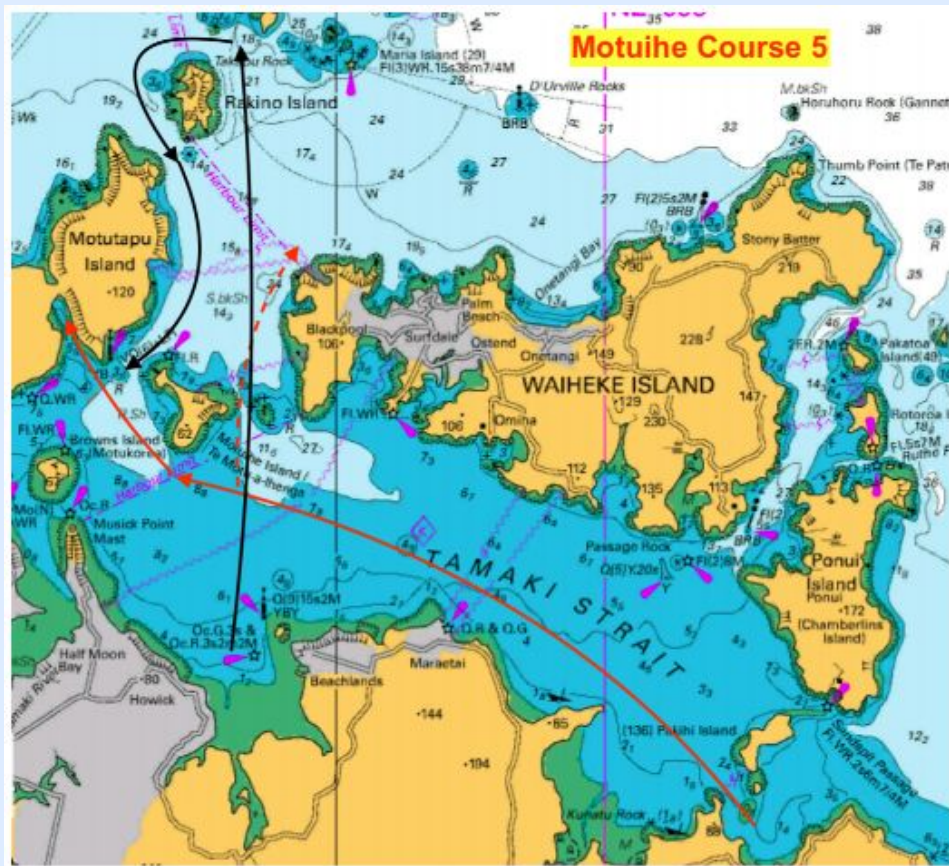
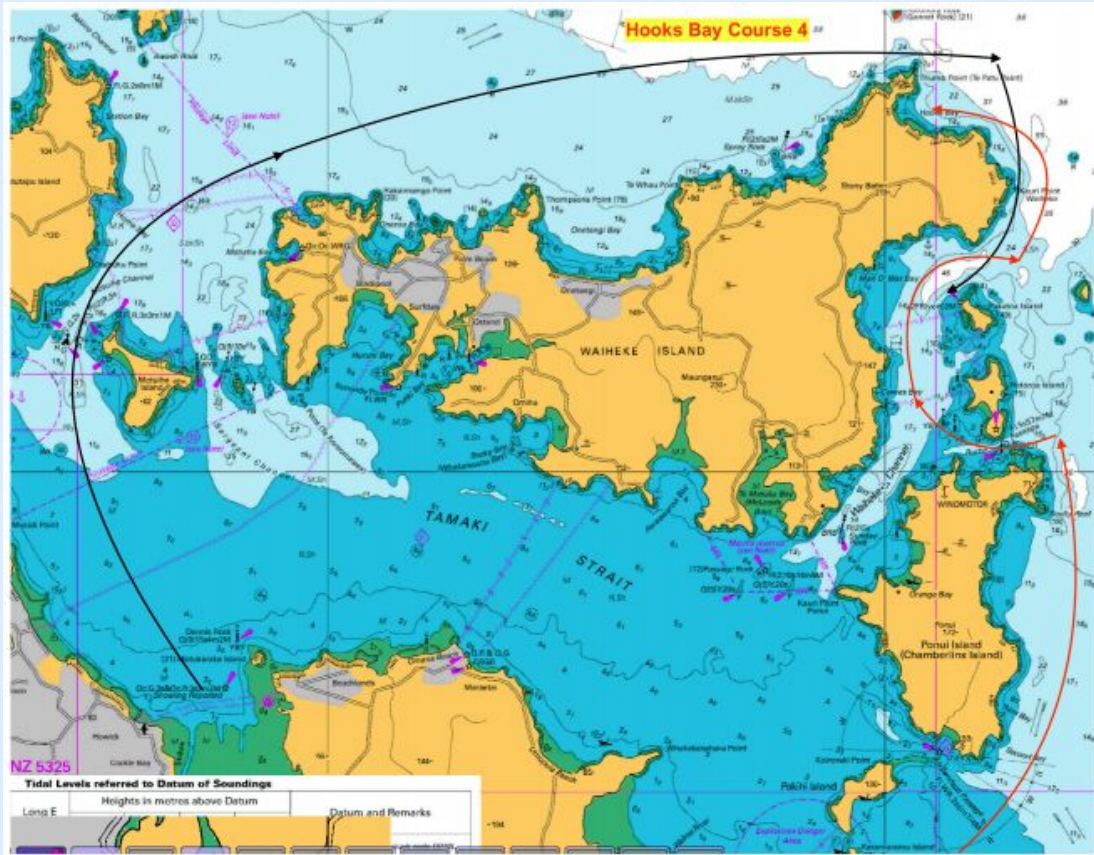
Murray Pearce

Afterguard





Bilgewater October 2020





Bilgewater October 2020

